



NORTH AMERICA

Address 3053 Fillmore St Unit 222 San Francisco California 94123
 Phone 1-888-766-2743
 Inquiries sales@mobridge-usa.com

ASIA-PACIFIC

Address 2/88 Northgate Drv Thomastown Melbourne VIC 3074
 Phone +61 3 9013 9758
 Inquiries sales@mobridge.com.au

EUROPE

Address Marconiweg 15 3899 BR, Zeewolde The Netherlands
 Phone +31 36 521 84 31
 Inquiries sales@mobridge-eu.com

MOST Installation Guide
 iPod & Bluetooth Installation Instruction Manual



Introduction

mObridge A2010/A2011 iPod solution emulates a CD Changer and uses CD Changer controls to access off-board audio sources including iPod and AUX devices. If your car is not already equipped with a CD Changer, it may be necessary to have the car programmed by your dealer in order to use the mObridge A2010/A2011 with it. CD Changer retention is not supported.

mObridge ABT2010/ABT2011 iPod and Bluetooth solution is an A2010/A2011 plus the additional functionality of Bluetooth hands-free connection in vehicle, by emulating the Bluetooth controls already featured. If your car is not already equipped with a Bluetooth system, it may be necessary to have the car programmed by your dealer in order to use the mObridge ABT2010/ABT2011 with it. CD Changer retention is not supported.

mObridge M1000-M-BT1 Bluetooth solution emulates the Bluetooth controls featured in the vehicle. If your car is not already equipped with a Bluetooth system, it may be necessary to have the car programmed by your dealer in order to use the mObridge M1000-M-BT1.

mObridge M1000-M-DA1 Digital Pre-Amp offers digital signal directly into an aftermarket sound processor via TOSLINK, it may be necessary to have the car programmed for Factory amplifier by your dealer in order to use the mObridge M1000-M-DA1.

For system setup please see: mObridge WIZARD Guide

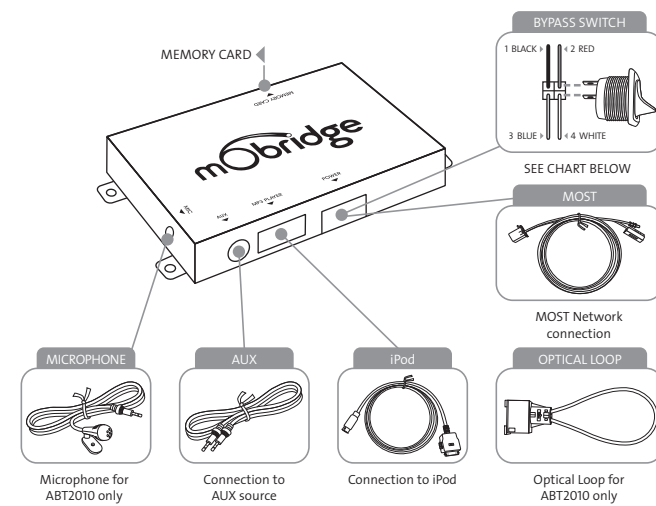


Programming the car for mObridge products:

- AUDI**
 - A2010 – no coding is required
 - ABT2010/M1000-M-BT1/DA1 – MMI software should be updated to 3360 to 4200 (YYYY)
- BMW**
 - A2010/ABT2010/M1000-M-BT1/DA1 – ALL BMW vehicles are required to be "coded" - ie have CD Changer enabled in the vehicle. This requires some knowledge and access to Autologic diagnostic tool.
- LAND ROVER**
 - A2011/ABT2011/M1000-M-BT1/DA1 – Generally no programming is required but in some cases (e.g. no device was connected onto the optical ring) it is needed to enable a Bluetooth with service computer.
- MERCEDES BENZ**
 - A2010/ABT2010/M1000-M-BT1/DA1 – Generally no programming is required but in some cases (e.g. no device was connected onto the optical ring) it is needed to enable a Bluetooth/CD Changer with StarDiagnose tool.
- MINI**
 - A2010/ABT2010/M1000-M-BT1/DA1 – ALL BMW vehicles are required to be "coded" - ie have Bluetooth/CD Changer enabled in the vehicle. This requires some knowledge and access to Autologic diagnostic tool.
- PORSCHE**
 - A2010/ABT2010/M1000-M-BT1/DA1 – Generally it is needed to enable a Bluetooth/CD Changer with the PIWIS service computer but in rare cases the PCM accept the mObridge without this enabling process.

PLEASE NOTE PROGRAMMING VARIES BY REGION

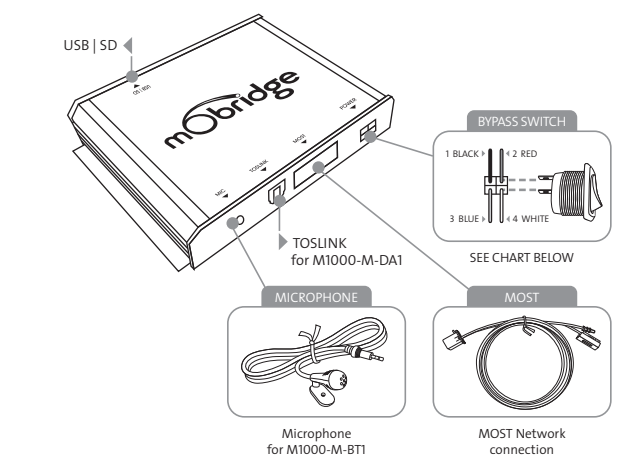
A2010/11 | ABT2010/11 | XMD-A2010 Package Content & Electrical Installation



WIRE COLOUR	DESCRIPTION	USE IN A2010/11 ABT2010/11 XMD-A2010
▶ 1 Black	GND (Battery - GND)	Ground (Battery --) Terminal 31 Klemme 31 / Kl.30
▶ 2 Red	Constant 12V	Power (B+ constant) Terminal 30 Klemme 30 / Kl.30
▶ 3 Blue	varies	Not used
▶ 4 White	bypass or "valet" input	"Valet" MOST bypass switch

Please Note When Servicing Your Vehicle You must set the mode selector switch to service mode (bypass CD Changer) position otherwise the service computer may detect an unknown device in the fiber optic system which can lead to errors reported.

M1000-M-BT1 | M1000-M-DA1 Package Content & Electrical Installation

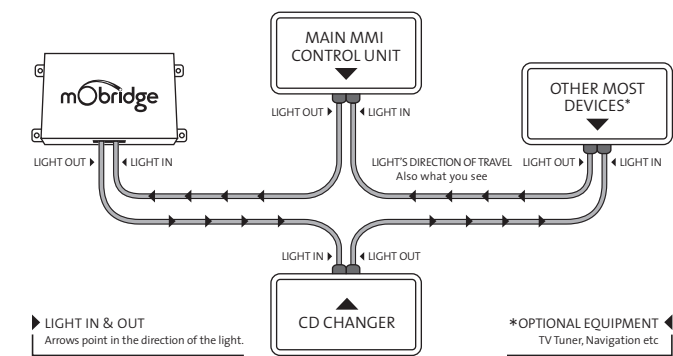


WIRE COLOUR	DESCRIPTION	USE IN M1000-M-DA1	USE IN M1000-M-BT1
▶ 1 Black	GND (Battery - GND)	Ground (Battery --) Terminal 31 Klemme 31 / Kl.30	Ground (Battery --) Terminal 31 Klemme 31 / Kl.30
▶ 2 Red	Constant 12V	Power (B+ constant) Terminal 30 Klemme 30 / Kl.30	Power (B+ constant) Terminal 31 Klemme 31 / Kl.30
▶ 3 Blue	varies	Remote Amp Trigger Output	Not used
▶ 4 White	bypass or "valet" input	"Valet" MOST bypass switch	"Valet" MOST bypass switch

Please Note When Servicing Your Vehicle You must set the mode selector switch to service mode (bypass CD Changer) position otherwise the service computer may detect an unknown device in the fiber optic system which can lead to errors reported.

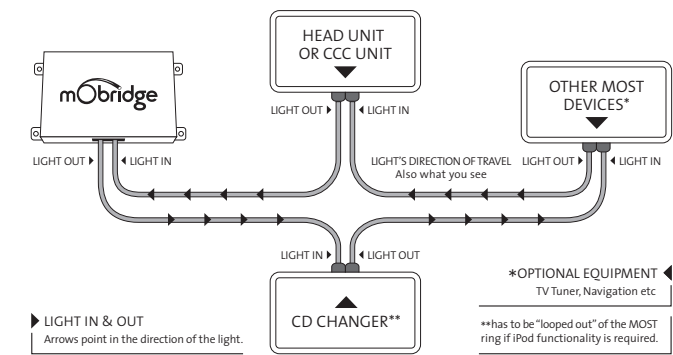
Installation Notes ▶ AUDI

Please see: Audi vehicle compatibility chart for application guide.



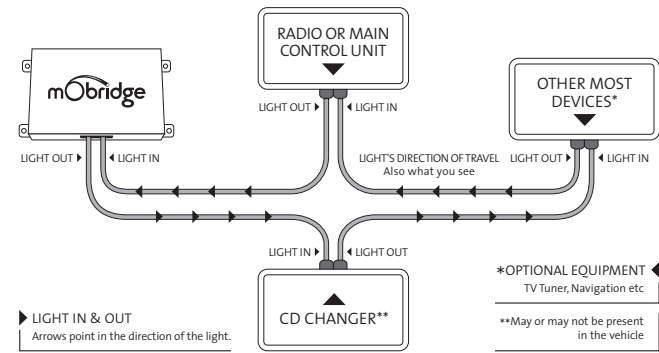
Installation Notes ▶ BMW

Please see: BMW vehicle compatibility chart for application guide.



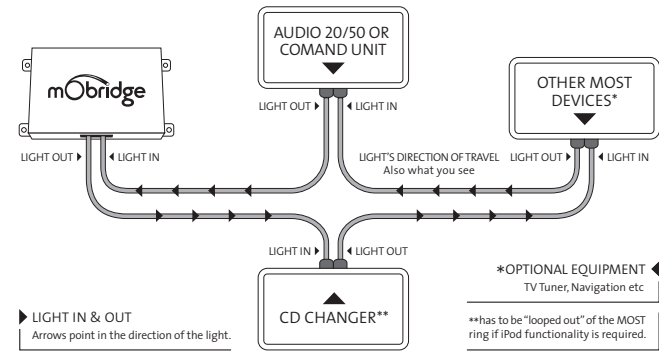
Installation Notes ▶ Land Rover

Please see: Land Rover vehicle compatibility chart for application guide.



Installation Notes ▶ Mercedes Benz

Please see: Mercedes Benz vehicle compatibility chart for application guide.

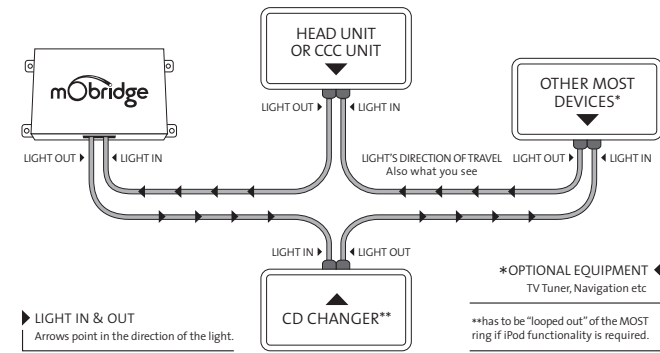


mObridge | 2010 FIBERDYNE SYSTEMS PTY LTD

05

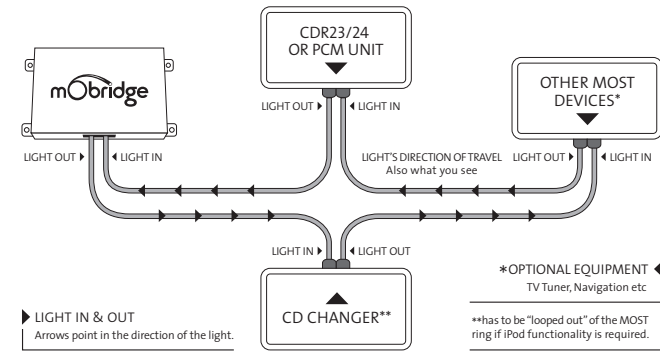
Installation Notes ▶ MINI

Please see: MINI vehicle compatibility chart for application guide.



Installation Notes ▶ Porsche

Please see: Porsche vehicle compatibility chart for application guide.



mObridge | 2010 FIBERDYNE SYSTEMS PTY LTD

06

▶▶ mObridge Update Wizard

1 Installation of mObridge Update Wizard

The mObridge Update Wizard allows you to configure and update mObridge devices to suit different vehicles via four different methods:

- ▶ Memory Card
- ▶ USB Cable (this method will be used for future product releases)
- ▶ iPod Cable Adaptor
- ▶ Bluetooth (with mObridge Bluetooth products)

Operating System requirements: PC running Windows XP, Vista & Windows 7

The wizard can be downloaded from www.mobridgeinc.com/node/109 Download and save the file to your computer, open the file and follow the installation instructions.

To open the Wizard go to Start ▶ All Programs ▶ mObridge ▶ mObridge Update Wizard

2 Using the Update Wizard

Once the wizard has been opened it lists three different ways to update the device:

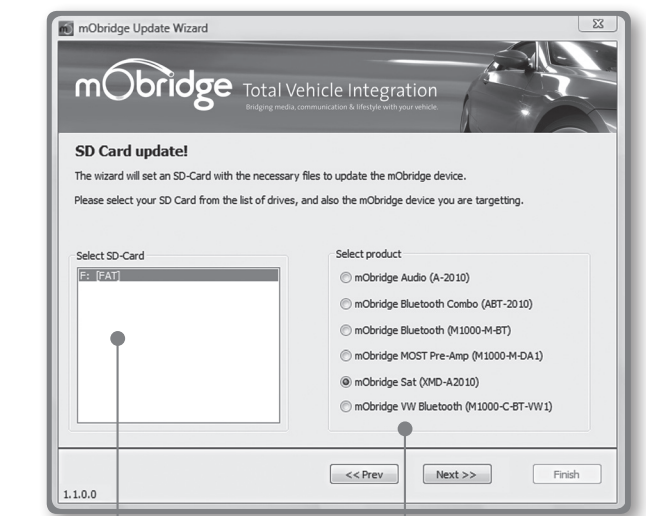
- ▶ iPod Cable Adaptor
- ▶ Bluetooth
- ▶ Memory Card

mObridge | 2010 FIBERDYNE SYSTEMS PTY LTD

07

▶▶ Updating via Memory Card

If you are going to use the Memory Card method please insert/connect a blank SD CARD which has been formatted to FAT. Micro SD cards are not compatible. Once the memory card has been detected by the PC it will appear in the window.



▶ SD CARD DETECTED BY PC

▶ CHOOSE PRODUCT TO UPDATE

mObridge | 2010 FIBERDYNE SYSTEMS PTY LTD

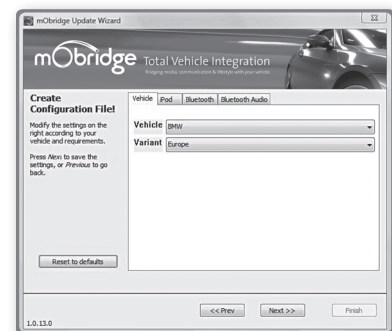
08

▶▶ Updating via Memory Card

This page allows you to configure the mObridge device to suit the vehicle.

The page shown to the right relates to updating a mObridge ABT2010.

It has Bluetooth settings which will not be available when configuring non-Bluetooth capable products.



Across is a list of options that each configuration tab gives you.

- ▶ Vehicle: Audi, BMW, BMW (Non-MP3), Landrover, Mercedes, Mini, Porsche, SAAB
- ▶ Variant: Europe, North America

- ▶ iPod: Enable/Disable
- ▶ iPod Browse: First Playlists, Numbered Playlists, Full Folder Browsing

- ▶ Bluetooth Pin: DO NOT CHANGE THIS OPTION
- ▶ Auto-connect/disconnect on key-in: Enable/Disable
- ▶ Dummy phonebook for BT control: Enable/Disable
- ▶ BT control via CDC: Enable/Disable
- ▶ Advanced BMW phonebook (for CCC): Enable/Disable

- ▶ Mic Gain: 0-15 (default is 4)
- ▶ Bluetooth Volume: 0-15 (default is 15)
- ▶ Ring Volume: 0-15 (default is 15)
- ▶ Prompt Volume: 0-15 (default is 15)
- ▶ A2DP Volume: 0-63 (default is 63)

CONTINUED ▶

mObridge | 2010 FIBERDYNE SYSTEMS PTY LTD

09

▶▶ Updating via Memory Card

Once you have chosen the configuration options that are required for your vehicle push the NEXT button at the bottom of the page. A file will then be written to the SD card.

The SD card can now be ejected from the computer and inserted in the mObridge device as per the following instructions:

- ▶ 01 Install mObridge device into the vehicle as per the installation instructions.
- ▶ 02 Turn the vehicles ignition ON and make sure the radio is on.
- ▶ 03 Insert the SD card into the mObridge device.
- ▶ 04 Leave the SD card in the mObridge device for 10 minutes and then eject it.
- ▶ 05 Turn vehicle ignition OFF and wait for the MOST bus to go into "sleep" mode*
- ▶ 06 Turn vehicle ignition back ON and verify the correct operation of the mObridge device.

*MOST bus "sleep" times vary from vehicle to vehicle. The easiest way to tell if it in "sleep" mode is to connect an iPod to the mObridge device and wait until it stops charging. Once it has stopped charging the iPod, it is in "sleep" mode.

mObridge | 2010 FIBERDYNE SYSTEMS PTY LTD

10

▶▶ Updating via iPod Adaptor Cable & Bluetooth

The iPod adaptor cable is the easiest and fastest way to update a mObridge device. iPod adaptor cables can be ordered from www.mobridgeinc.com

The first time you install the iPod update cable to a PC, the driver software will also need to be installed. Windows will normally find the driver software for you and install it automatically.

Once this is completed you are now ready to update the mObridge device.

Follow the instructions below:

- ▶ 01 Open mObridge Update Wizard.
- ▶ 02 Select iPod cable adaptor as the desired update method and push NEXT.
- ▶ 03 If the driver software has been installed correctly and the iPod cable adaptor is connected to the PC it will show up on the next page as FT232R USB UART.
- ▶ 04 Turn the vehicles ignition ON and make sure the radio is on.
- ▶ 05 Make sure the iPod dock cable is connected to the mObridge device.
- ▶ 06 Connect the iPod cable adaptor to the iPod dock cable.
- ▶ 07 Now push the NEXT button.
- ▶ 08 You will then see a screen that says Connecting...
- ▶ 09 Once the wizard has established communication with the mObridge device a screen will appear with two buttons labelled UPDATE and CONFIGURE.
- ▶ 10 Choose the CONFIGURE option to update the mObridge devices settings.

CONTINUED ▶

mObridge | 2010 FIBERDYNE SYSTEMS PTY LTD

11

Across is a list of options that each configuration tab gives you.

- ▶ Vehicle: Audi, BMW, BMW (Non-MP3), Landrover, Mercedes, Mini, Porsche, SAAB
- ▶ Variant: Europe, North America

- ▶ iPod: Enable/Disable
- ▶ iPod Browse: First Playlists, Numbered Playlists, Full Folder Browsing

- ▶ Bluetooth Pin: DO NOT CHANGE THIS OPTION
- ▶ Auto-connect/disconnect on key-in: Enable/Disable
- ▶ Dummy phonebook for BT control: Enable/Disable
- ▶ BT control via CDC: Enable/Disable
- ▶ Advanced BMW phonebook (for CCC): Enable/Disable

- ▶ Mic Gain: 0-15 (default is 4)
- ▶ Bluetooth Volume: 0-15 (default is 15)
- ▶ Ring Volume: 0-15 (default is 15)
- ▶ Prompt Volume: 0-15 (default is 15)
- ▶ A2DP Volume: 0-63 (default is 63)

- ▶ 11 Once you have chosen the configuration options that are required for your vehicle push the NEXT button at the bottom of the page.
- ▶ 12 The mObridge device will now be updated. The wizard will re-establish its connection with the mObridge device and you can verify that the settings have been updated correctly.
- ▶ 13 Turn vehicle ignition OFF and wait for the MOST bus to go into "sleep" mode*
- ▶ 14 Turn vehicle ignition back ON and verify the correct operation of the mObridge device.

*MOST bus "sleep" times vary from vehicle to vehicle. The easiest way to tell if it in "sleep" mode is to connect an iPod to the mObridge device and wait until it stops charging. Once it has stopped charging the iPod, it is in "sleep" mode.

mObridge | 2010 FIBERDYNE SYSTEMS PTY LTD

12